

MATERIALS 2025

MAT

DEKALOGIK 德可®



BASIC 基本标准

D1
MFC
装饰板



MEDIUM 中等标准

D2
ACRYLIC+PRIME
亚克力+ 美致烤漆



D3
ALU + GLASS
铝框玻璃门

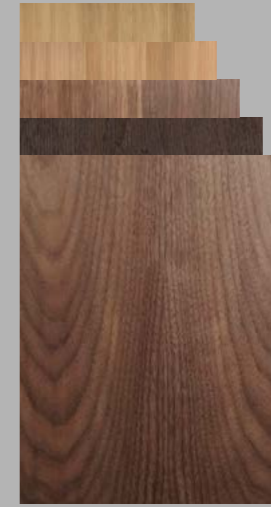


HIGH-END 高端标准

D4
LACQUER
烤漆



D5
VENEER
实木贴皮



D6
STAINL. STEEL
不锈钢



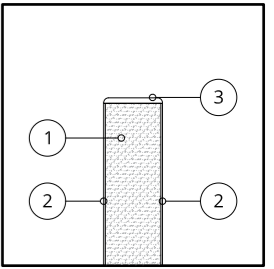
D1 | MFC 装饰板

Basic, common and very durable material. Easy to produce and process. There are three thicknesses 10, 18 and 25mm. 25mm is used to produce wider shelves to avoid bending. MFC is divided into plain colors range and wooden textures.

D1是我们整个系列里最基础的、常见的且非常耐用的材料。它们易于生产和加工。一般有有厚度，分别为18毫米和25毫米。25毫米的厚度主要用于制作衣柜中的层板和顶底板，以避免弯曲。MFC分为两种颜色：纯色系列和木纹系列。

CN | 国产

木格 MOGO



- 1. Chipboard
- 2. Melamine film
- 3. ABS edge bending (laser technology)

	10 / 18 / 25mm U001 SV Pure white	10 / 18 / 25mm U008 SV Warm white	10 / 18 / 25mm U003 SV Soft beige
10 / 18 / 25mm U002 SV Coffee grey	10 / 18 / 25mm U002 CD Leather coffee	10 / 18 / 25mm U005 SV Anthracite gray	10 / 18 / 25mm U006 SV Dust black
10 / 18 / 25mm R113 SW Bright ash	10 / 18 / 25mm R118 SD Natural oak	10 / 18 / 25mm R115 SW Brown oak	10 / 18 / 25mm R117 SW Straight dark oak

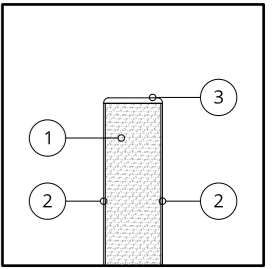
NEW FROM 2024

D1 | MFC 装饰板

Basic, common and very durable material. Easy to produce and process. There are two thicknesses 18 and 25mm. 25mm is used to produce wider shelves to avoid bending. MFC is divided into plain colors range and wooden textures.

D1是我们整个系列里最基础的、常见的且非常耐用的材料。它们易于生产和加工。一般有两种厚度，分别为18毫米和25毫米。25毫米的厚度主要用于制作衣柜中的层板和顶底板，以避免弯曲。MFC分为两种颜色：纯色系列和木纹系列。

EU | 欧洲进口



1. Chipboard
2. Melamine film
3. ABS edge bending (laser technology)

		18mm	10 / 18 / 25mm
		W1000 Pure silk white	U1026 Crystal silk white
18mm	18mm	10 / 18 / 25mm	10 / 18 / 25mm
U11552 Milky white	U12168 Soft beige	U702 Rice gray	U16002 Congo brown
18mm	18mm	10 / 18 / 25mm	
F638 Concrete gray	F641 Concrete black	U12290 Anthracite dark grey	

U12290



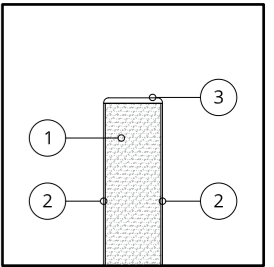
F638+U1026



U1026+U16002



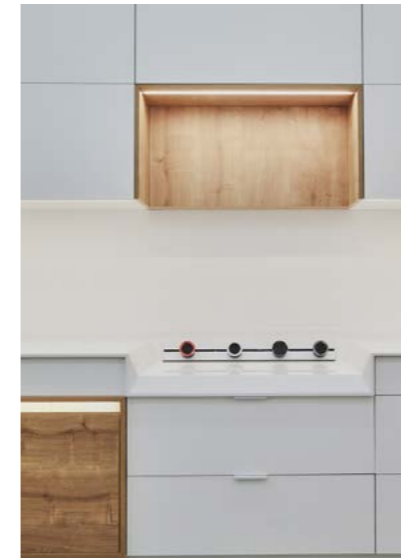
U16002



1. Chipboard
2. Melamine film
3. ABS edge bending
(laser technology)



U1026+H3303



H1377+U1026



R20038+U1026



H1379

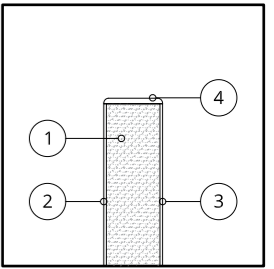
D2 | ACRYLIC+PRIME

亚克力+ 美致烤漆

Acrylics main feature is a very smooth and thick layer of the acrylic surface stuck on MDF board. Most popular acrylics are ultra matte with silky surface. All edges are sealed by ABS edge bending. Prime board is an imported lacquered board with ultra matte finish. All edges are also sealed by ABS edge bending.

亚克力的主要特点是在MDF板上覆盖了一层非常平滑和厚的亚克力表面。超哑光是我们最受欢迎的亚克力，具有丝绸般的表面。所有边缘都由ABS激光封边完成。PM板是一种进口的漆面板，具有超哑光的表面。所有边缘都由ABS封边完成。

SENOSAN



1. MDF
2. Acrylic finish
3. Back laminate (mat)
4. Acrylic edge bending (laser technology)

19mm MT11082 Matte pure white	19mm U11102XT Matte warm white	19mm U12188XT Matte warm grey	19mm MT85468 Matte rice gray
19mm U12168XT Milky grey	19mm MT85383 Matte gray dark	19mm U12290 Anthracite	19mm MT8855 Matte metallic gray
19mm MT8421 Matte black	19mm HG11110 High gloss cold white	19mm HG1982 High gloss warm white	19mm HG85468 High gloss rice gray
	19mm HG85468 High gloss metallic	19mm HG8855 High gloss metallic gray	19mm HG8421 High gloss black

U12290



U11102XT



MT85383

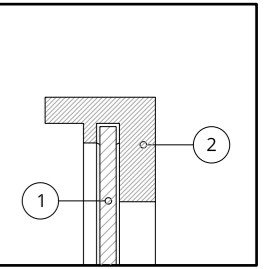
MT11082

D3 | ALU+GLASS

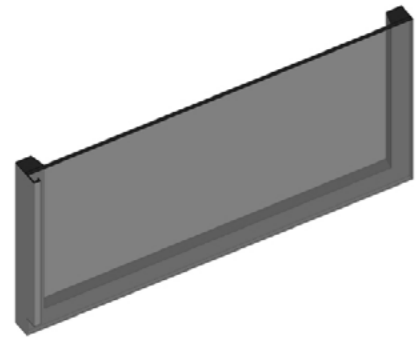
铝框玻璃门

High-end aluminium frame with 5mm safe glass or mirror. Frames have integrated handles in the vertical edges. There are two options for hinges: BLUM ClipTop or high-end concealed Italian hinge.

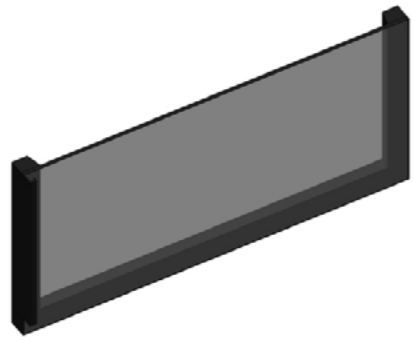
铝框玻璃门使用高档铝框，配备5毫米厚度的安全玻璃或镜子。框架的边缘配备了一体式拉手。其中铰链有两个选项：BLUM ClipTop 或高端意大利隐藏式铰链。



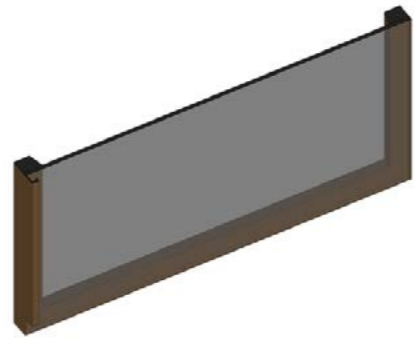
1. Glass/mirror 5 mm
2. Aluminium frame with hinges



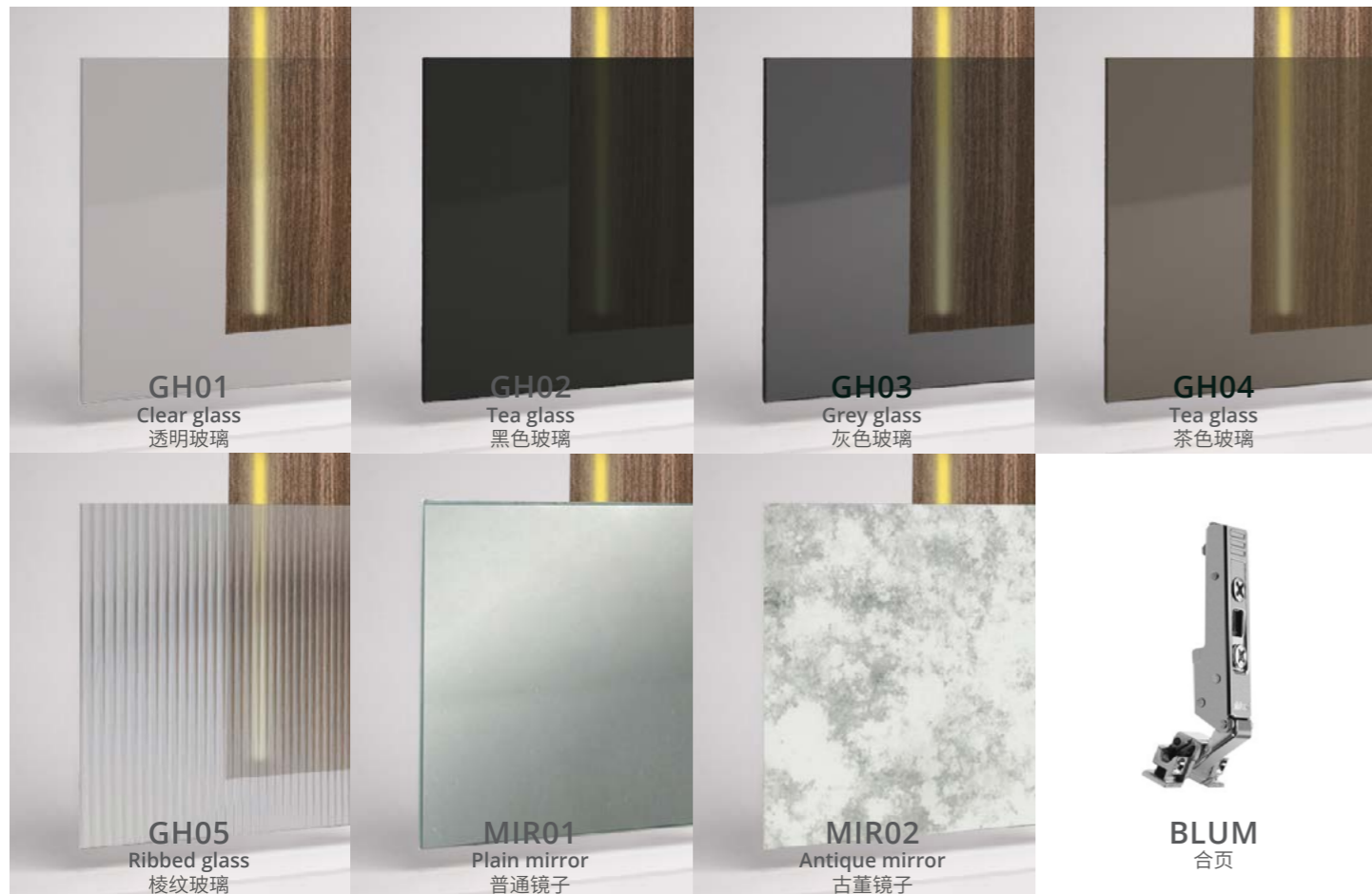
FRAME A-17-1 (25mm)
Dark grey
深灰色



FRAME A-17-1 (25mm)
Black
黑色



FRAME A-17-1 (25mm)
Bronze
古铜色



GH01
Clear glass
透明玻璃

GH02
Tea glass
黑色玻璃

GH03
Grey glass
灰色玻璃

GH04
Tea glass
茶色玻璃

GH05
Ribbed glass
棱纹玻璃

MIR01
Plain mirror
普通镜子

MIR02
Antique mirror
古董镜子



BLUM
合页

ALU+ BLACK GLASS



ALU+GREY GLASS



ALU+GREY GLASS



ALU+MIRROR

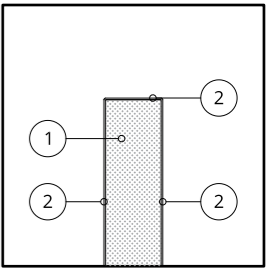
D4 | LACQUER 烤漆

Lacquers main feature is continuous finish on all sides and edges. Lacquered doors are considered as high-end finish with more exclusive look. All kinds of edge grooved handels are possible to produce in lacquered doors.

烤漆的主要特点是在所有侧面和边缘上都具有连续的表面处理。烤漆门被认为是高端饰面，具有更加独特的外观。在漆面产品中可以使用各种边缘凹槽手柄。



S-MATT



- 1. MDF
- 2. Six sides water based lacquer.



SMATT 0175



SMATT SSOFF-01



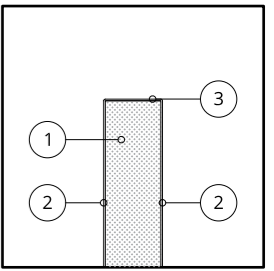
SMATT 0253

SMATT 0200

D5 | VENEER 实木贴皮

Veneer is a thin, natural layer of wood stuck to core board. Using veneered door you can achieve natural feeling without worries about bending or cracking, which happens often to solid wood material.

实木贴皮是一种较薄的天然木皮，粘贴在MDF或多层板上。使用这种材质的面板不仅可以实现一种纯天然的感觉，而且无需担心像实木材料一样的弯曲和开裂问题。



- 1. OSB/MDF
- 2. Veneer 0.7mm
- 3. Veneer edge 1mm



VENS 01



VENS 08



VENS 12

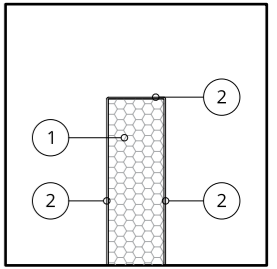


VENS 03

D6 | STAINL. STEEL 不锈钢

Stainless steel doors are based on aluminium honeycomb core which is wrapped by stainless steel (1.2-2.0 mm thick). Stainless steel doors have the same finished on all sides because still is welded and polished. D7 is considered as the most high-end finish in our collection.

不锈钢门基于铝蜂窝芯，其外包裹不锈钢(厚度为1.2-2.0毫米)。不锈钢门的所有边缘都具有相同的饰面，因为钢材被焊接和抛光。D7是我们系列中最高端的材料。



1. ALU. Honeycomb
2. Stainless steel 1.2 mm



SSBZVI

SSNAVI+SSBSVI



SSNAHL

SSBZVI

我们为战略合作伙伴和设计师提供样品包，
样品展示台和技术知识。
有关更多信息，请与我们联系以在展示厅或设计工作室安排会议。

To our strategic partners and designers we provide packages of samples,
sample display stations and technical knowledge.
For more information please contact us to arrange a meeting in the showroom
or our design studio.

联系方式 CONTACT

WWW.DEKALOGIK.COM
INFO@DEKALOGIK.COM

地址 ADD

展厅+设计中心
北京市七棵树创意园 A6-3 Design Hub

SHOWROOM & DESIGN HUB
BEIJING QIKESHU CREATIVE PARK A6-3 Design Hub

生产车间
北京市顺义区南彩镇郝家疃村林吉产业园 B17

PRODUCTION WORKSHOP
B17, Linji Chaneyuan, Nancaizhen Shunyi, Beijing



欢迎在以下社交媒体搜索DEKALOGIK关注我们

